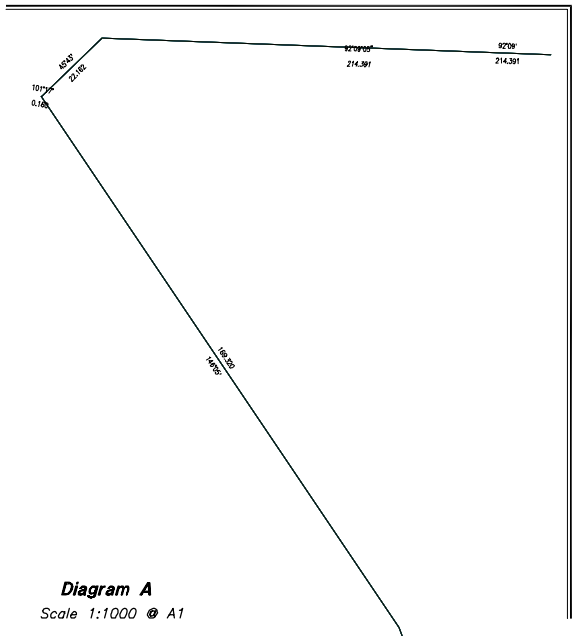
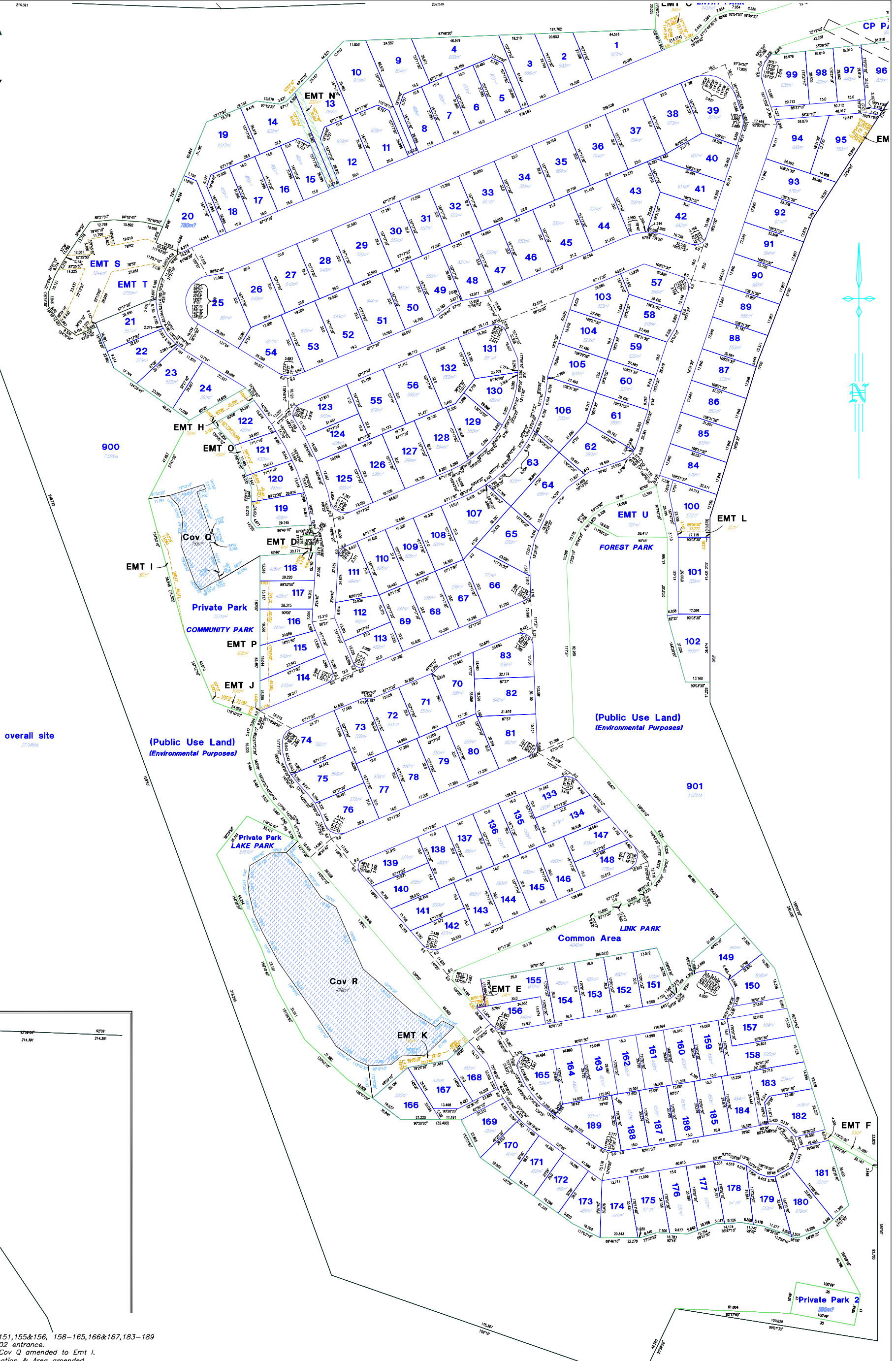



For information in this vicinity
See Diagram A Below



- REV P: 26-10-2007 GBD Amend Lots 151,155&156, 158-165,166&167,183-189
- REV O: 26-06-2007 MPL Amend Lot 102 entrance.
- REV N: 27-04-2007 BWH Emt L near Cov Q amended to Emt I.
- REV M: 20-04-2007 BWH Lot 39 Truncation & Area amended.
- REV L: 19-03-2007 BWH Emts S,T & U replaced Lots 902 & 903.
- REV K: 08-03-2007 BWH Amend Lot Nos. & Bdy's
- REV J: 16-02-2007 RCG Amend Cov Bdy's and EMT's
- REV I: 29-01-2007 BWH Amend Lot 903.
- REV H: 16-11-2006 AMV/RG Chgs to park lots 903,902 & cp near lot 155.
- REV G: 30-08-2006 MPL created covenants Q and R over water bodies.
- REV F: 17-08-2006 RCG amend lot numbers
- REV E: 14-07-2006 RCG amendments to lots 1-69, and 103-132
- REV D: 27-04-2006 RCG amendments to lots 95/96
- REV C: 06-12-2005 RCG amendments to lots along Eastern Bdy after Ident adjustment to external bdy, add transformer sites etc
- REV B: 07-10-2005 RCG amendments to lots 23-25 etc
- REV A: 08-12-2004 RCG amended lots 119-122, 56/58 and 103

Scale 1 : 1000 @ A1
Scale 1 : 2000 @ A3

Project: Elysium Noosa Pty Ltd		Client: Pearson Property Group	
Level Descr:	Scale: 1:1000 @ A1	Proposed Community Titles Subdivision	
Origin: 12d File - 6994-21	Date: 14-10-2004	LOT CALCULATIONS PLAN	
FB:	Surveyor:	Parish: Noosa	Job Ref: 6994
LB:	Comp by: RCG	Local Authority: Noosa Shire Council	
	DWG Name: 6994-26P.dwg		



W: www.pmm.com.au T: 07 5496 7888
F: 07 5496 8855 E: info@pmm.com.au
PO Box 14414 Noosa QLD 4556 Australia
1 Innovation Parkway, Caloundra Waters QLD 4575 Australia
PMM Surveys Conics Pty Ltd ACN 076 076 876 ABN 51 032 988 853

Plan No: 6994-26P